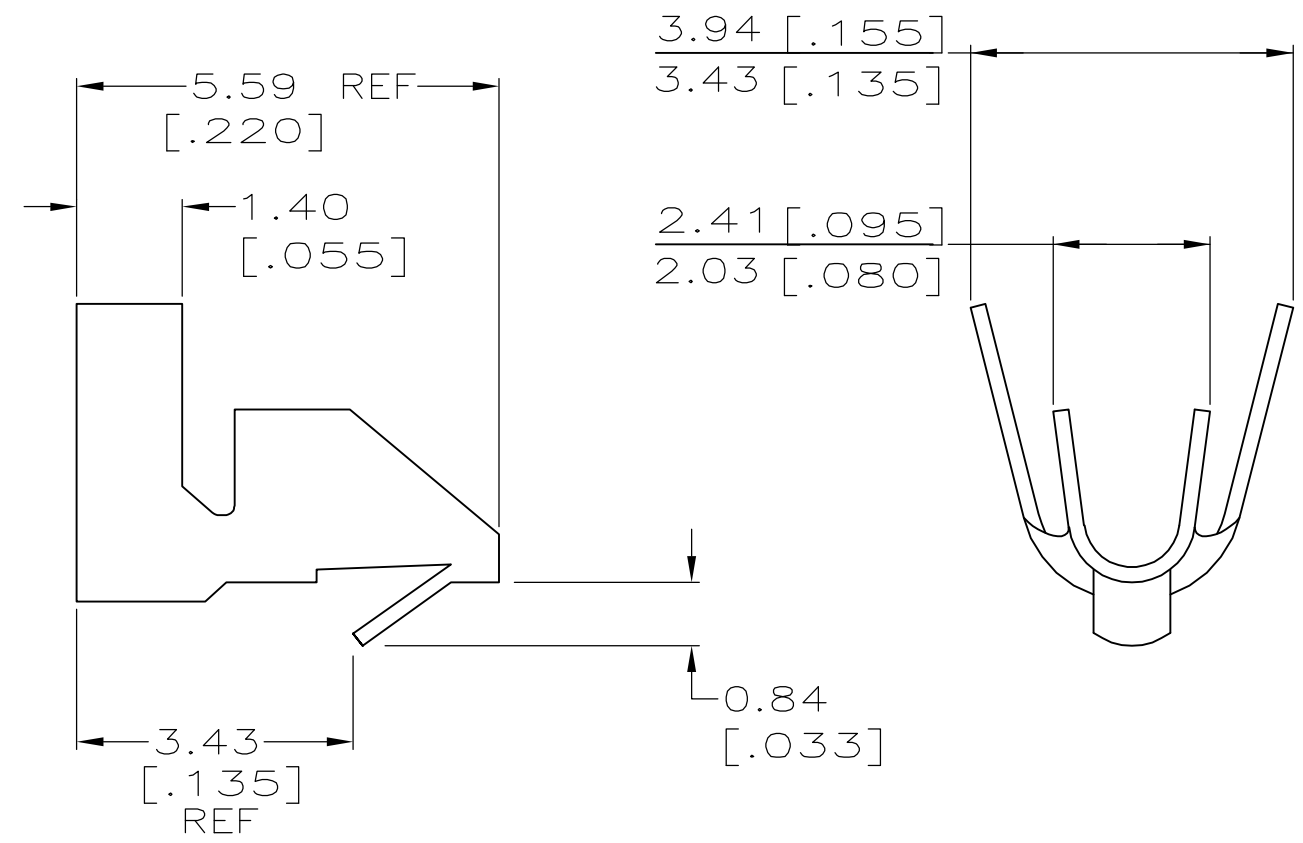
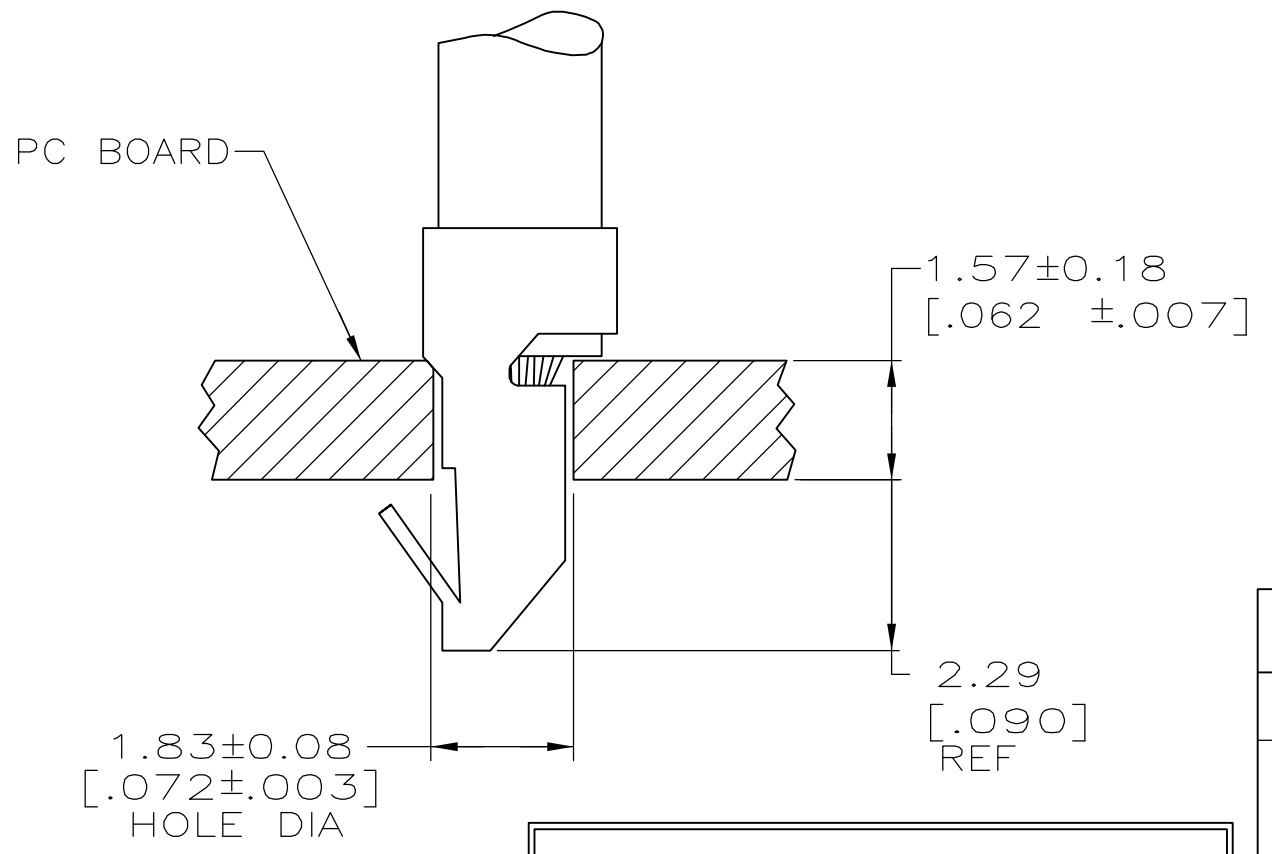


THIS DRAWING IS UNPUBLISHED. RELEASED FOR PUBLICATION  
 © COPYRIGHT BY TYCO ELECTRONICS CORPORATION. ALL RIGHTS RESERVED.

LOC	DIST	REVISIONS			
P	LTR	DESCRIPTION	DATE	DWN	APVD
		H1	REVISED PER ECO-05-012314	25OCT05	KW JE



- PARTS COMPLY WITH AMP SOLDERABILITY SPEC 109-11-3.
- WIRE RANGE: 0.3 - 0.9 mm<sup>2</sup> (22 - 18 AWG).
- INSULATION RANGE: 1.52 - 2.79 [.060 - .110] DIA.
- 0.00254 [.000100] MIN BRIGHT TIN-LEAD OVER 0.00203 [.000080] MIN MATTE COPPER.
- 0.00508 [.000200] MIN BRIGHT TIN-LEAD.
- DIMENSIONS IN BRACKETS ARE IN INCHES.
- FOR FOREIGN PRODUCTION ONLY.
- 4µm [.00016] MIN BRIGHT TIN PLATING.



**METRIC**

FINISH	MATERIAL	PART NUMBER
8	0.20[.008] PHOS BRONZE	3-770565-2
8	0.20[.008] BRASS	3-770565-1
4 7	0.20[.008] BRASS	770565-3
5	0.20[.008] PHOS BRONZE	770565-2
4	0.20[.008] BRASS	770565-1

THIS DRAWING IS A CONTROLLED DOCUMENT.		DWN B. LEWIS 12-20-89	<b>tyco</b> Electronics		Tyco Electronics Corporation Harrisburg, PA 17105-3608	
DIMENSIONS: mm [INCHES]		CHK R. SWING 12-21-89			NAME MINI AMP-IN	
TOLERANCES UNLESS OTHERWISE SPECIFIED:		APVD W. LONG 12-21-89	PRODUCT SPEC		RESTRICTED TO	
0 PLC ± -		APPLICATION SPEC		SIZE A3		
1 PLC ± -		WEIGHT -		CAGE CODE 00779		
2 PLC ± -		CUSTOMER DRAWING		DRAWING NO C-770565		
3 PLC ± 0.13[.005]		SCALE 10:1		SHEET 1 OF 1		
4 PLC ± -		REV H1				
ANGLES ± -						
FINISH						
MATERIAL SEE TABLE						
SEE TABLE						